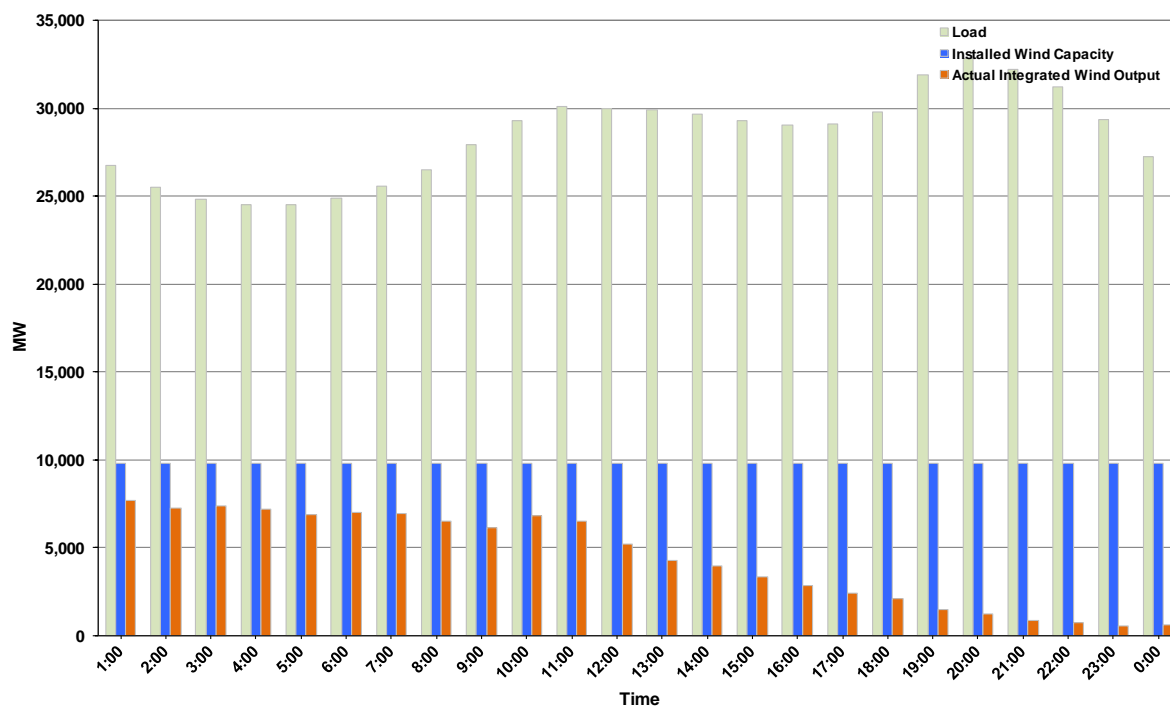




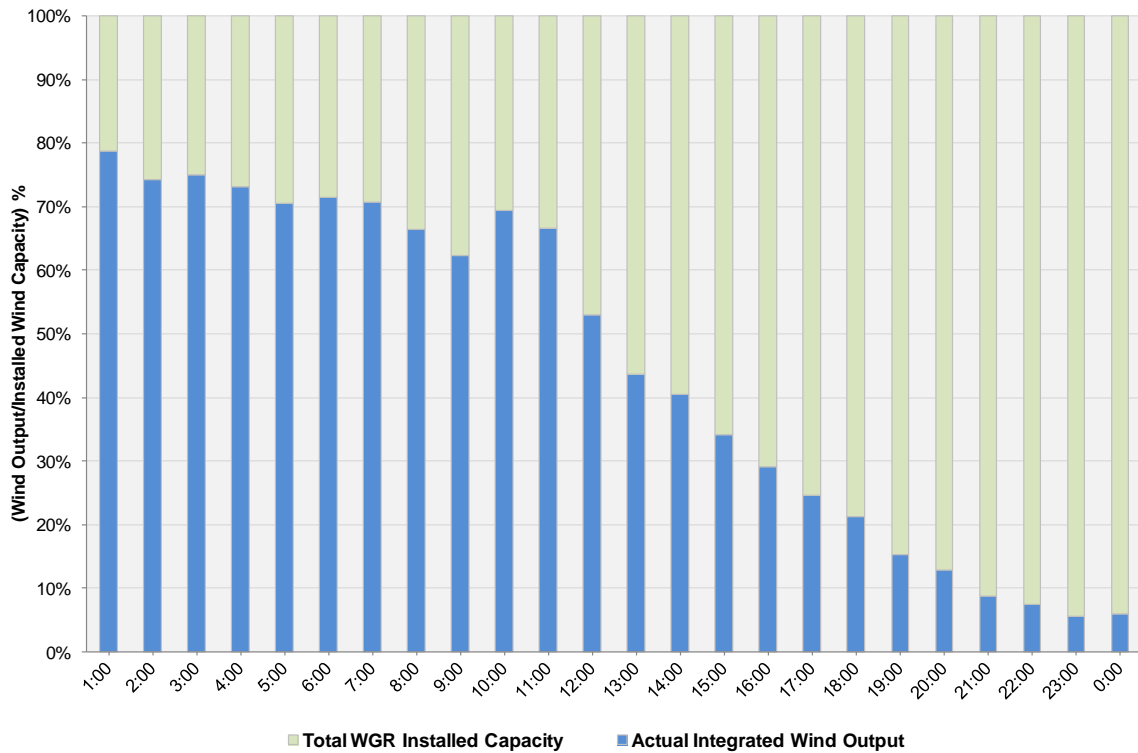
ERCOT Grid Operations Wind Integration Report: 02/10/2013

Peak Load	32,805 MW
Load Peak Hour (HE)	20
Wind over Peak	1,258 MW
Wind Record 02/09/13	9,481 MW
Max Wind Value	7,851 MW
Wind Peak Time	00:20
Wind Integration %	29.16%

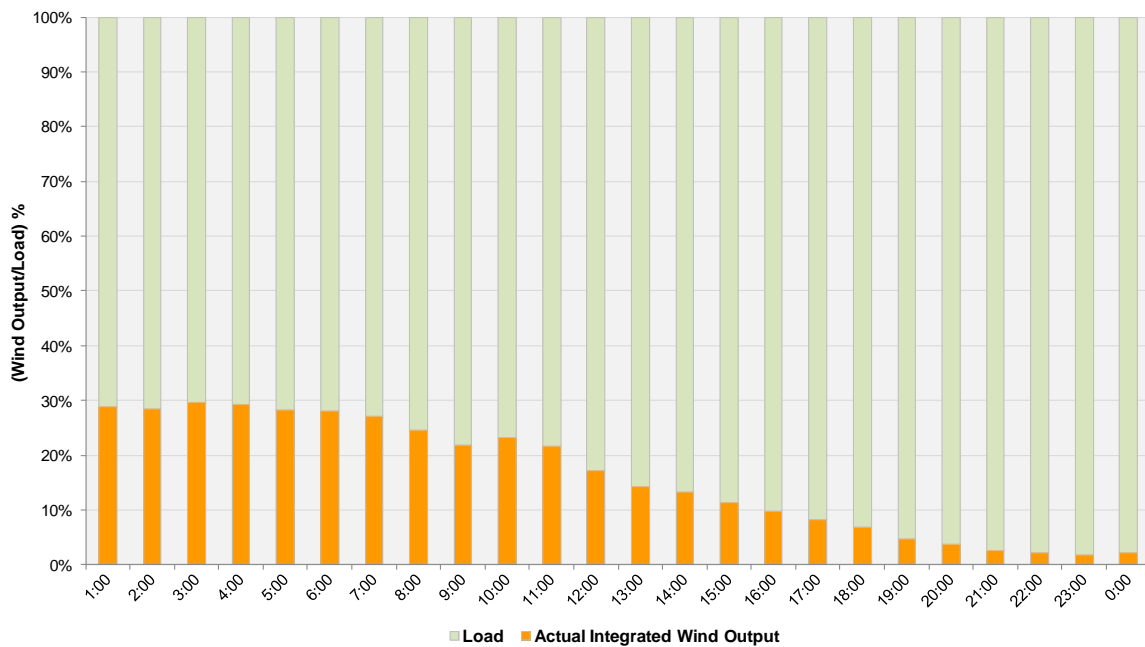
**Hourly Average Actual Load vs. Actual Wind Output
02-10-2013**



Actual Wind Output as a Percentage of the Total Installed Wind Capacity
02-10-2013



Actual Wind Output as a Percentage of the ERCOT Load
02-10-2013



ERCOT Load vs. Actual Wind Output 2/3/2013 - 2/10/2013

